



The Preserve at Oak Meadows Clubhouse Design Development Update



Progress Toward Clubhouse Replacement

2016

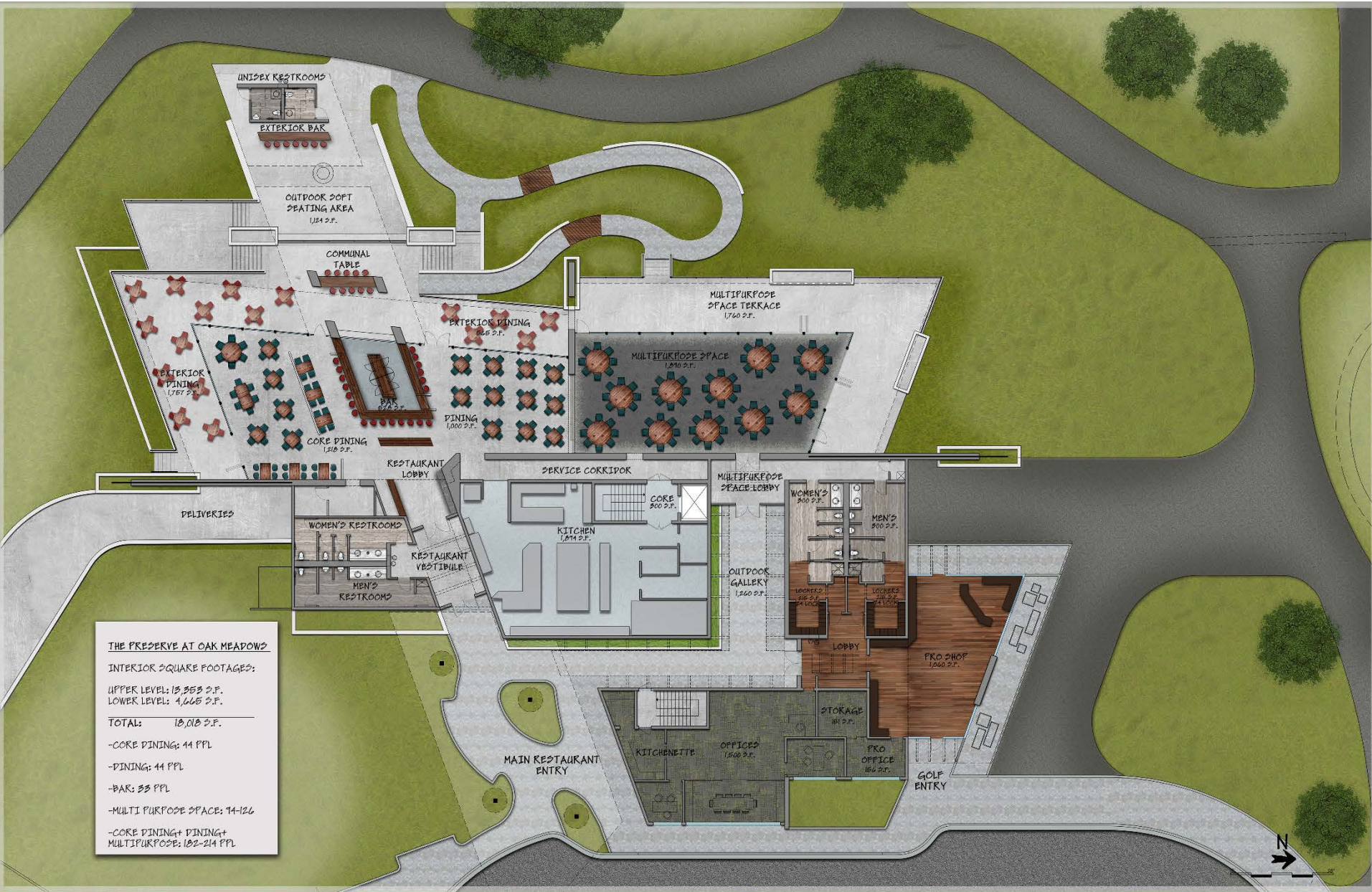
- Architect selected through a qualifications-based selection process
- Contract negotiated and approved with Daniel Wohlfeil Design, Ltd. for Concept and Schematic Design

2017

- Two concept designs presented to Board and for public comment in June
- Schematic Design Concept approved by Board in July
- Contract awarded to Daniel Wohlfeil Design, Ltd. for Design Development in November

2018

- Design Development Phase:
 - Further development of design features and space planning
 - Code, life safety and utility refinements
 - Review of costs
- Qualifications-based selection process for Construction Manager
- Business projections



THE PRESERVE AT OAK MEADOWS

INTERIOR SQUARE FOOTAGES:

UPPER LEVEL: 13,353 S.F.

LOWER LEVEL: 4,665 S.F.

TOTAL: 18,018 S.F.

-CORE DINING: 44 PPL

-PINING: 44 PPL

-BAR: 33 PPL

-MULTI PURPOSE SPACE: 14-126

-CORE DINING+ PINING+
MULTIPURPOSE: 102-214 PPL





View looking east at events space and terraces



View looking east at exterior restroom and patios



View looking east from cart path



View looking south at pro shop



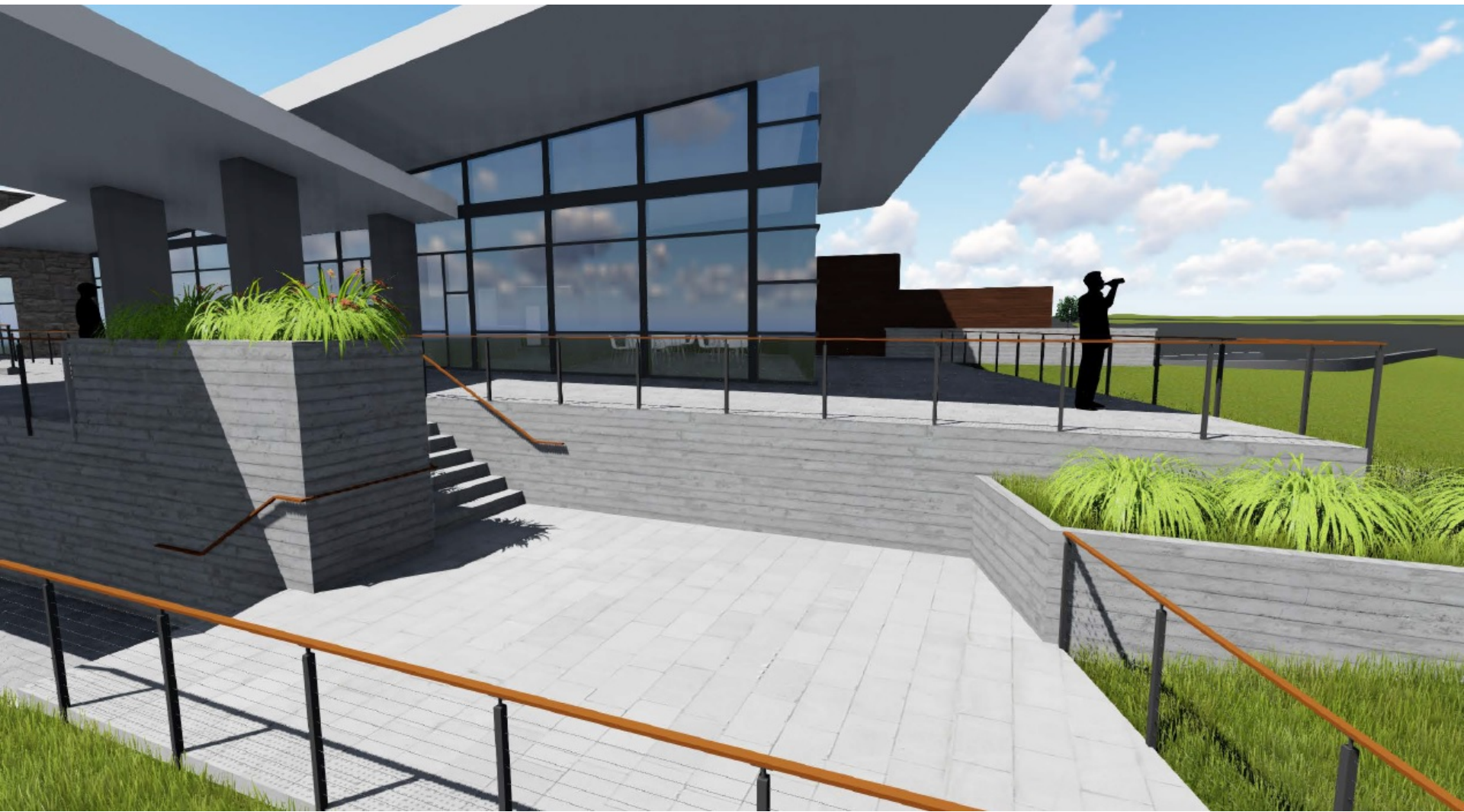
View looking north toward dining from the 18th green



Main entrance



ADA compliant walkway, planter box, and railing system.



Core Dining terrace area