

A landscape photograph showing a field of tall, dry grasses and wildflowers in the foreground. The field extends to a line of trees in the distance. The sky is filled with large, grey, dramatic clouds, with a small patch of blue sky visible near the top right. The overall scene is a natural, somewhat overgrown field.

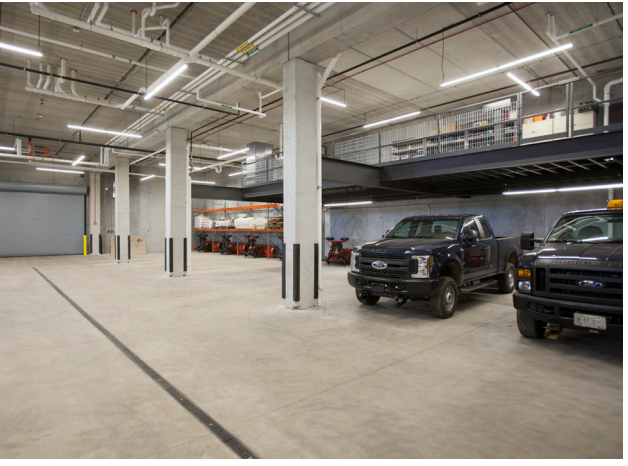
Grounds and Natural Resources Management Maintenance Campus

Community Open House and Presentation
07/27/2024

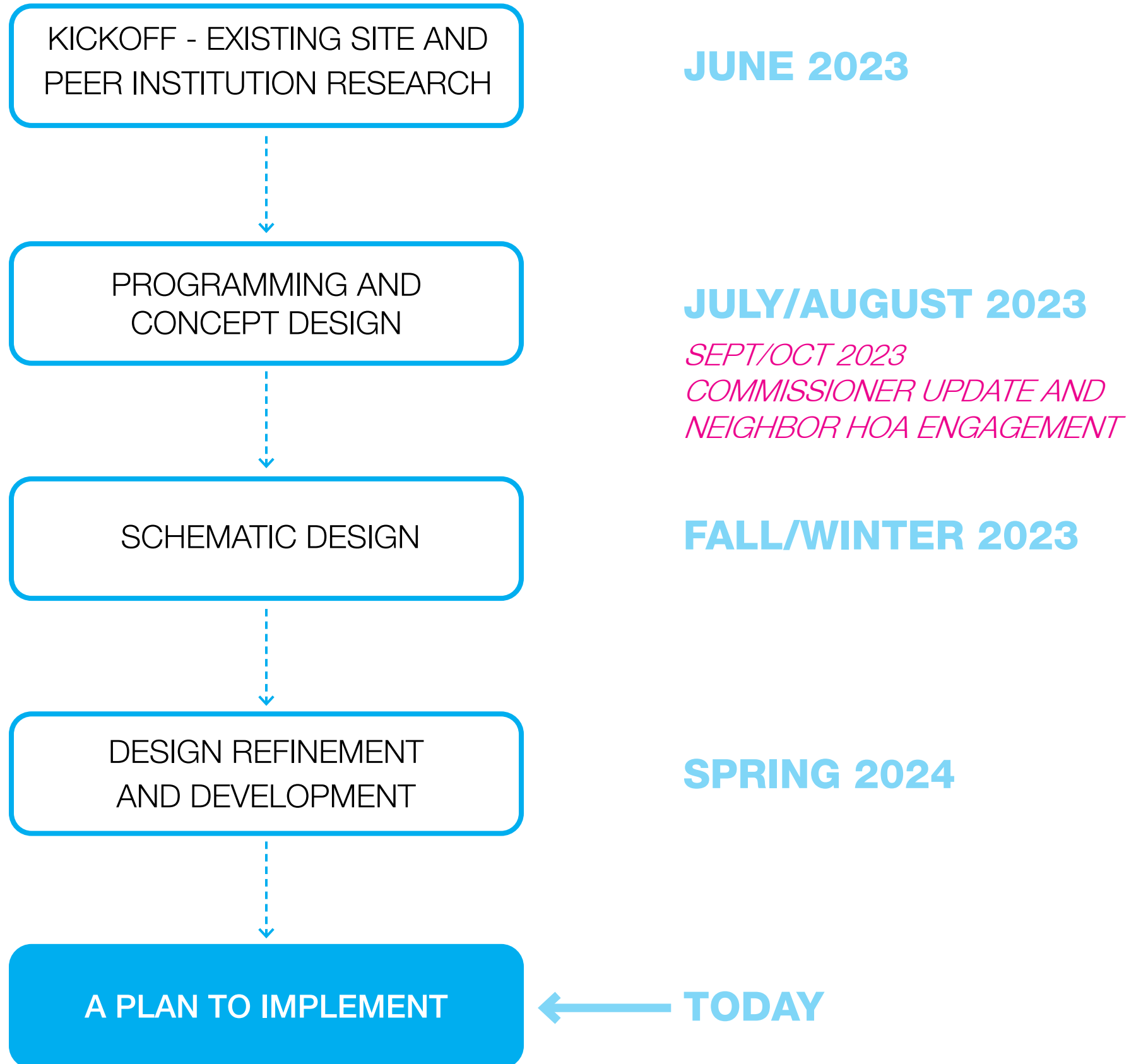
Woodhouse Tinucci Architects

30 Years of Excellence in Public Architecture

WTA
Woodhouse Tinucci Architects



PROJECT SCHEDULE



Existing Site Overview



Grounds and Natural Resources

FPDDC Mission:

“to acquire and hold lands containing forests, prairies, wetlands and associated plant communities or lands capable of being restored to such natural conditions for the purpose of protecting and preserving the flora, fauna and scenic beauty for the education, pleasure and recreation of its citizens.”

The 58 full time and approximately 21 seasonal FPDDC Grounds and Natural Resources staff are responsible for maintaining and enhancing all 25,000 acres of land.

Roads Crew

-over 200 acres of asphalt and gravel per year

Trails and Streams Crew

-175 miles of trails

Forestry Crew

-tree removal, propagation, and establishment

Landscape Crew

-mowing, planting, trimming

Natural Resources Crews

-wetland maintenance, brush clearing, prescribed burn, native plant propagation

Site Overview - Current Locations of Crews



Operating at this site since 1968
-6 Crews
-58 full time staff, 21 part-time
-170 Vehicles (75% stored outside)

13 hoop house and pump house

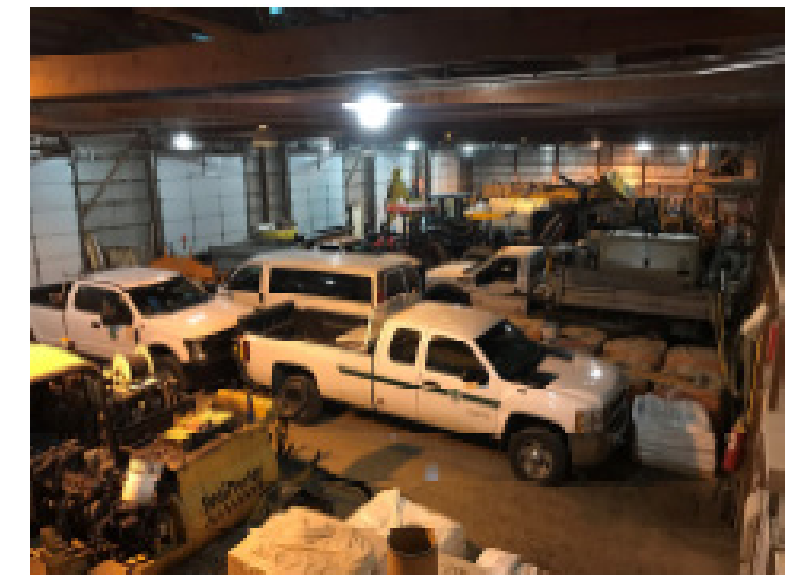
- NR-M
- NR-S
- G-F
- G-L
- G-R
- G-T&S
- ADM

- 1. truck parking
- 2. chemical mixing & storage
- 3. crew meeting trailer
- 4. truck and trailer parking
- 5. native seed trailer
- 6. office
- 7. outdoor plant prop
- 8. flammable storage burn equip.
- 9. small engine equip. storage
- 10. storage in barn (NRM in basement with seed harvestors), G-F material storage
- 11. nursery shop
- 12. volunteers
- 13. pump house
- 14. crew lockers
- 15. trucks and equipment
- 16. meeting, lockers, truck storage (?)
- 17. outdoor implement storage
- 18. vehicle parking
- 19. equipment storage
- 20. yard space
- 21. shop
- 22. trailer
- 23. de-icer/dust control
- 24. material + equipment storage
- 25. crew trailer and computer
- 26. vehicle, equip, & material storage
- 27. material + equipment storage
- 28. bay + work area
- 29. cold storage
- 30. outside storage
- 31. crew trailer
- 32. material storage
- 33. admin office
- 34. salt storage for water at fleet

Existing Conditions



Existing structures are 30-85 years old



Project Goals

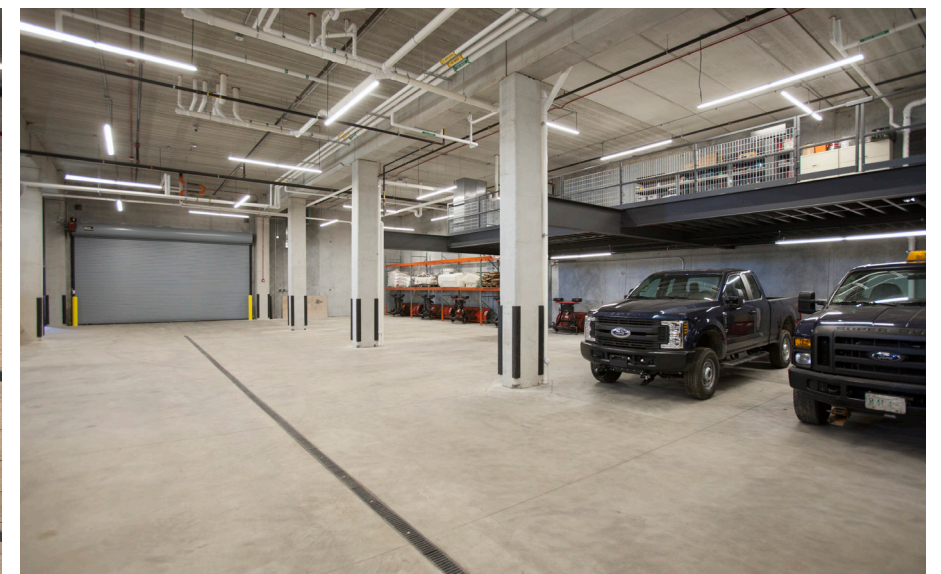
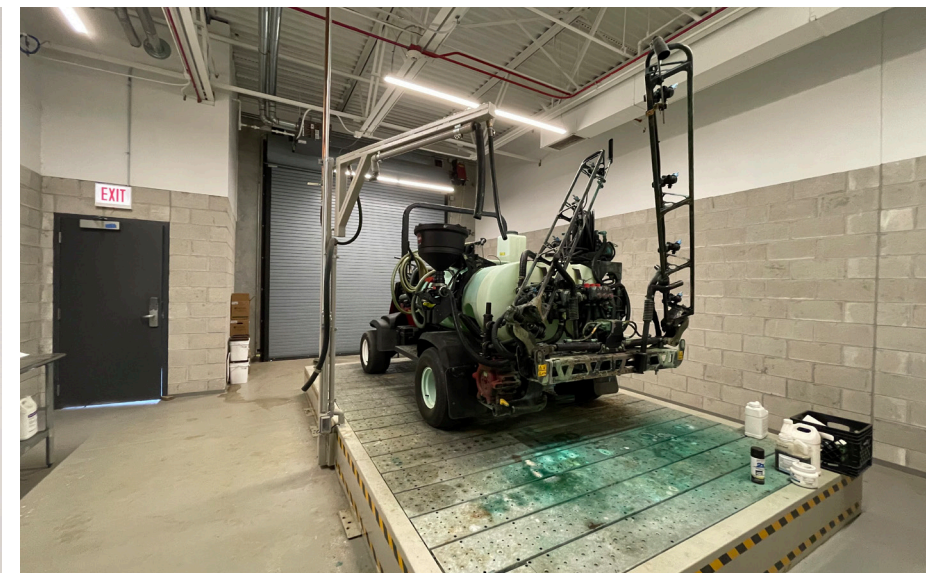
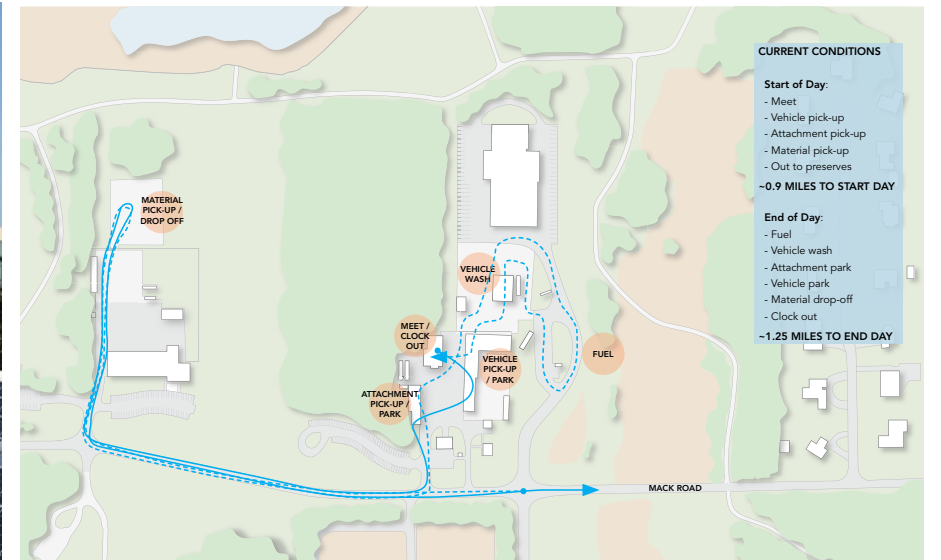
Efficiency

Safety

Durability

Sustainability

Well-Being



Life Cycle / Anticipated Benefits

Energy Use Reduction

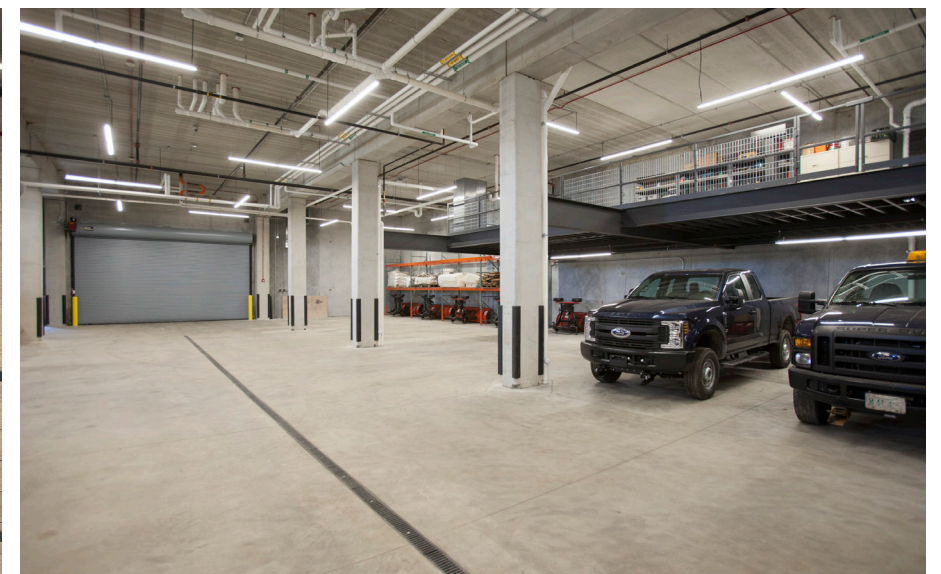
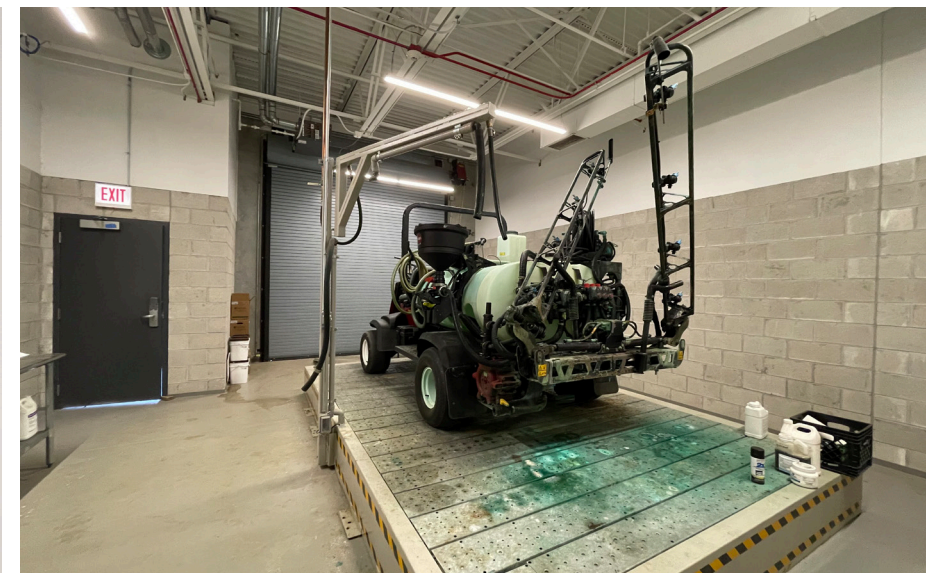
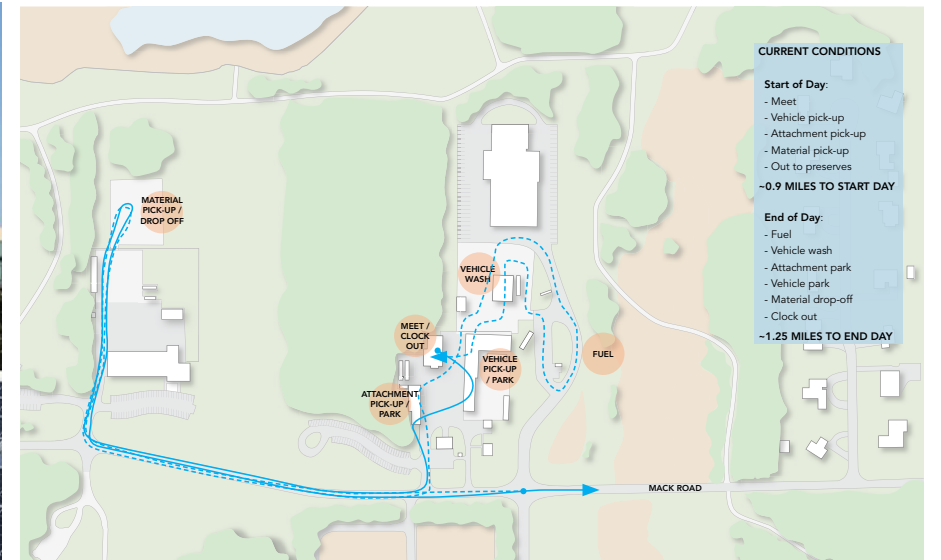
Water Use Reduction

Crew Time Savings and Increased Productivity

Reduced Vehicle Maintenance and Operational Costs

Extended Vehicle Life-Span

Improved Employee Well Being



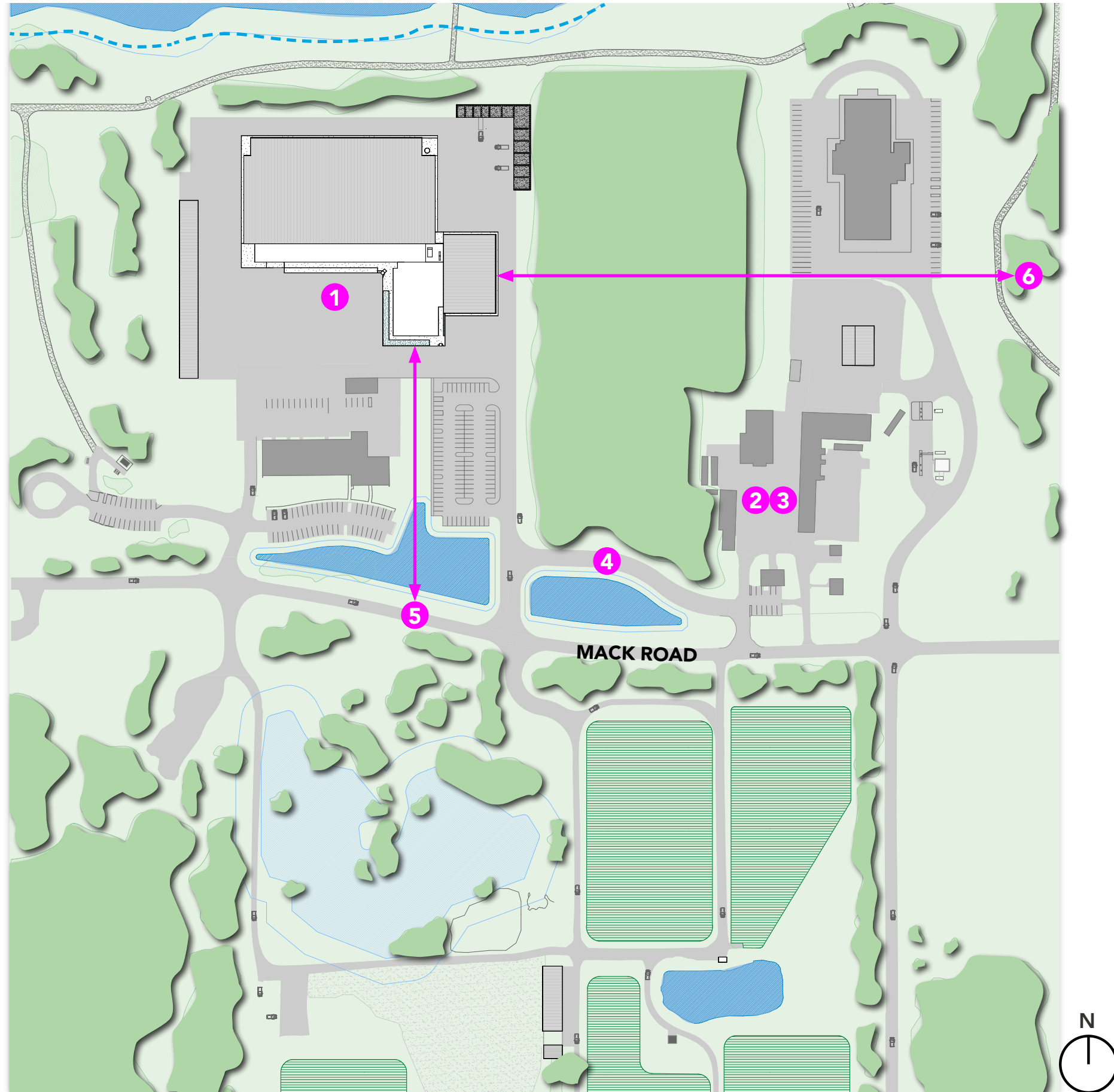
Design Development - Proposed Project



-6 Crews
-58 full time staff, 21 part-time
-170 Vehicles (10% stored outside)

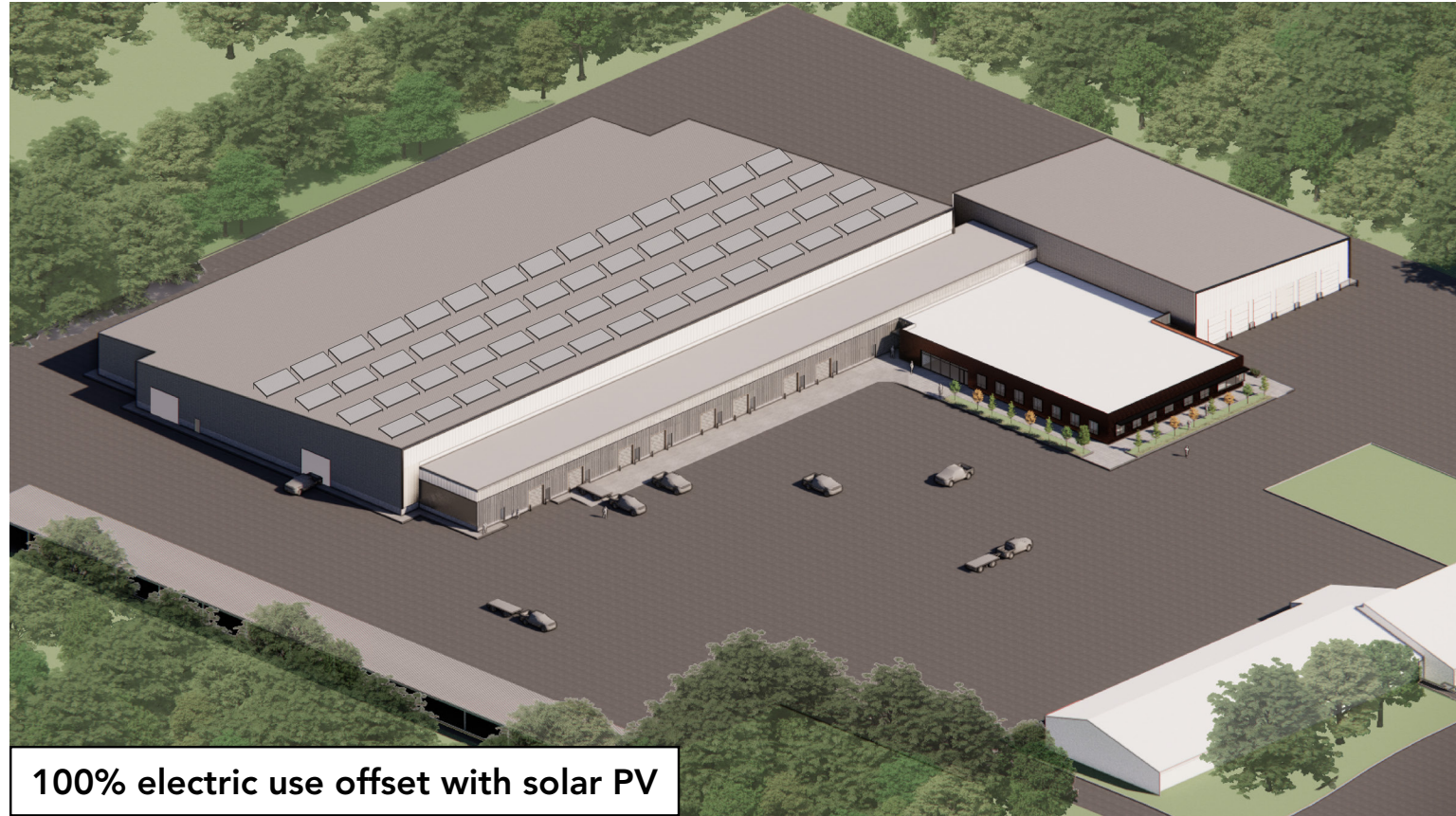
- 1 Maintenance garage
- 2 Tandem garage
- 3 Crew workshops
- 4 Administration and staff spaces
- 5 Maintenance yard
- 6 Trailer parking canopy
- 7 Wash bay
- 8 Staff parking
- 9 Inner drive
- 10 Relocated trail
- 11 Seed Processing Facility and Greenhouse
- 12 New connection to Mack Road

Design Development - Proposed Project



- 1 Building location reduces overall project costs
- 2 Minimizes construction duration
- 3 Maintains operations during construction
- 4 Reduced traffic on Mack Road
- 5 GNR maintenance building away from Mack Road
- 6 GNR maintenance building away from residents

Design Development - GNR Facility



100% electric use offset with solar PV

Solar PV Electrical Cost savings

- 100% electrical use offset
- \$1,700,000 utility cost savings over 30 years
- \$930,000 grant/rebates potentially available for solar

Reduced Energy Usage/Cost

- EUI: 30

*Average EUI for this building type: 48



Tandem Garage creates crew cost savings and efficiencies

Improved Vehicular Movement Efficiency

- 130 miles per year per vehicle
- Over 10,000 miles of less wear/tear and fuel per year

Design Development - GNR Facility



Crew Cost Savings through mobilization and start/end of day efficiencies

- 45min saved per day, per staff member
- \$20,700,000 gained staff value over 30yrs

Design Development - GNR Facility



All vehicles under roof extends vehicle life



Abundant natural light reduces energy use, improves employee well being

Extended Vehicle Life-Span

- 150% vehicle life extension
- \$6,800,000 savings over 30 yrs

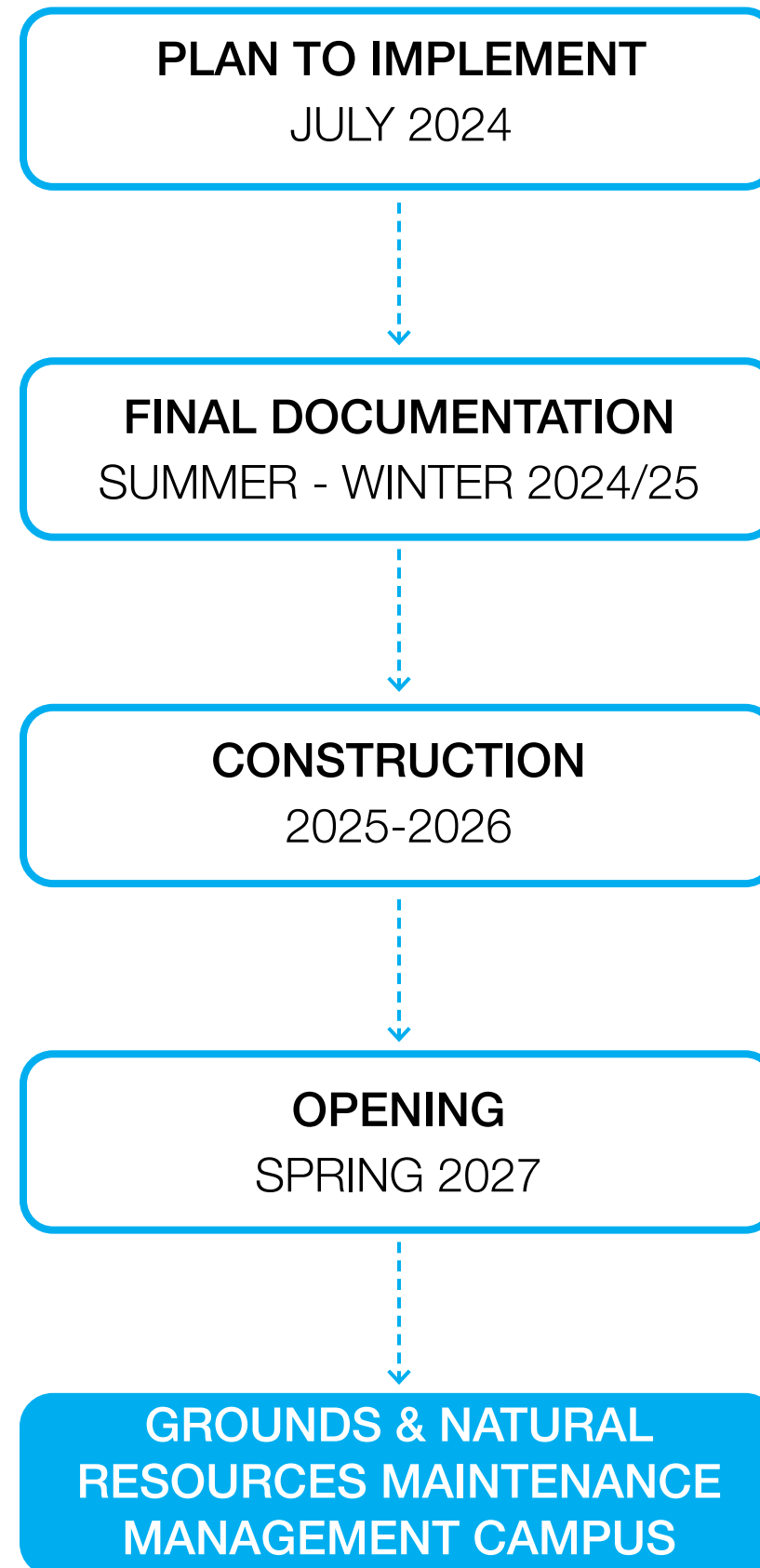
Design Development - Seed Processing Facility



Seed Building stats

- \$500,000 annual seed cost savings

PROJECT SCHEDULE



A landscape photograph showing a field of tall grasses and wildflowers in the foreground, with a line of trees in the background under a cloudy sky. The text "thank you." is overlaid in red on the right side of the image.

thank you.

**Grounds and Natural Resources
Management Maintenance
Campus**

Community Open House and Presentation
07/27/2024

Woodhouse Tinucci Architects